

## Key Features

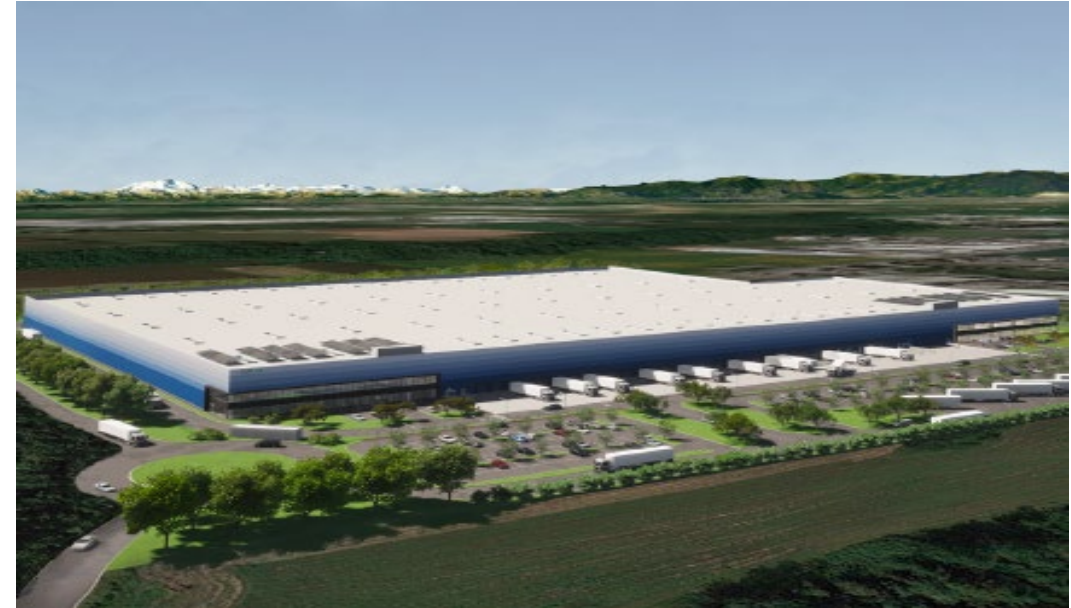
New logistics development BTS located in the municipality of Filago (BG) with the following features:

- Gross Land site area: 138,000 m<sup>2</sup>
- Total GLA: 51,383 m<sup>2</sup>
- GLA Warehouse: 48,956 m<sup>2</sup>
- Office: 2,427 m<sup>2</sup>

- Loading bays: 62
- Internal height under beam: 12 m
- Structural grid: 21,50 x 18 m
- Floor loading capacity: 7T/ m<sup>2</sup>
- Sprinkler system ESFR NFPA
- Manoeuvring area: 35 m
- LED lighting
- Energy class: BREEAM Very good
- Parking: 250 (cars) 30 (trucks)

### Surface:

Gross land site area	138,000 m <sup>2</sup>
Total GLA	51,383 m <sup>2</sup>

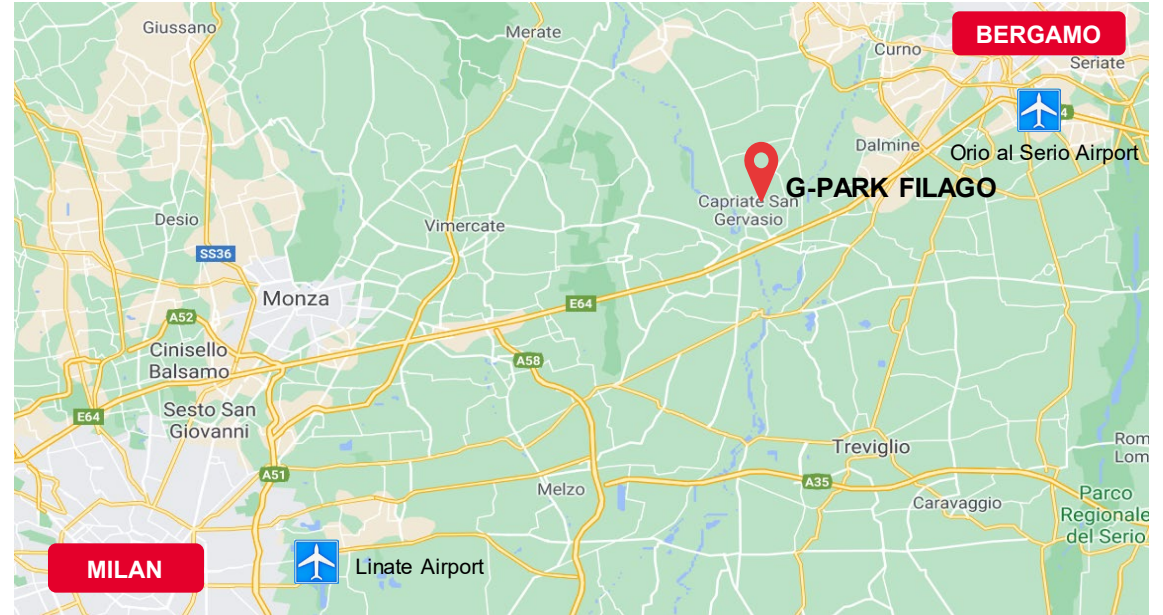


### For more information:

**Alessandro Mancini**  
 02 63799 1  
[alessandro.mancini@cushwake.com](mailto:alessandro.mancini@cushwake.com)

**Marzio Granata**  
 02 63799 1  
[marzio.granata@cushwake.com](mailto:marzio.granata@cushwake.com)

Via Turati 16/18  
 20121 Milano  
[cushmanwakefield.com](http://cushmanwakefield.com)



### Location

The new logistics development is located in the municipality of Filago (BG) in a strategic position, only 2 km away from the Pedemontana and from the A4 Motorway («Turin-Trieste») tollgate «Capriate San Gervasio».

### Distance

Pedemontana	2 km
A4 tollgate «Capriate San Gervasio»	2 km
Bergamo	17 km
Orio al Serio Airport	16 km
A51 Milan ring road	28 km
Milan	38 km
Linate Airport	50 km